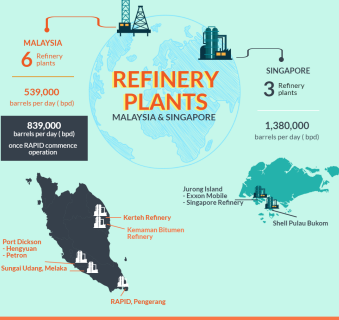
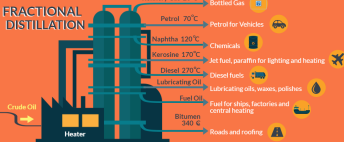


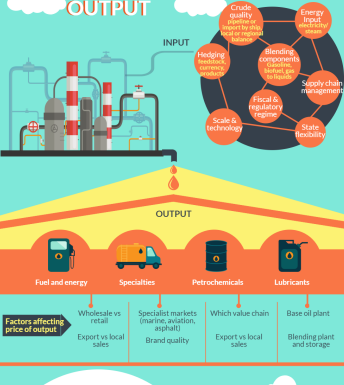
CRUDE OIL AND REFINERIES



FRACTIONAL DISTILLATION



INPUT & OUTPUT



CRACK SPREAD



TYPE OF CRUDES

There are many different varieties and grades of crude oil, measured by:

API GRAVITY

a measure of how heavy or light a petroleum liquid is compared to water

API > 10: it floats on water
The greater the number, the lighter the petroleum. Heavier crude are harder to refine.

SULPHUR CONTENT

Sulphur is an impurities found in crude oil.

Sulphur level > 0.5%: oil is 'sour'
Impurities need to be removed before the sour oil can be refined into petrol

BENCHMARK CRUDES

serves as a reference price for buyers and sellers of crude oil.

Crude	Country	API Gravity	Sulphur content
Brent Blend	North Sea	38.7	0.31%
WTI Blend	US	38.7	0.45%
Arabian Light	Saudi Arabia	33.4	1.8%
Isthmus	Mexico	33.4	1.8%
Bonny Light	Nigeria	33.4	0.16%
Urals	Russia	31.7	1.35%
Fateh	Dubai	31.4	2%
Tapis	Malaysia	45.2	0.03%

UNCONVENTIONAL OIL

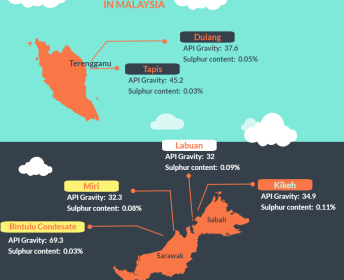
SHAILE OIL

North Dakota
API Gravity: 40.1 - 50
Sulphur content: 0.15 - 1

OIL SAND

Alberta Canada
API Gravity: 10
Sulphur content: 5

CRUDE OIL IN MALAYSIA



DONKEY STOCK enlightens you with business and investments discoveries

Sources: Oilera, The age of oil, Wikipedia, Petrosas, Photography/Freepik, Canadian Fuel Association,

The content in this email remains the intellectual property of Donkey Stock. Any users of Donkey Stock content are responsible to ensure that your content comply with ethical guideline, which includes citing Donkey Stock. This infographic is for informational purposes only and does not constitute an offer to sell, to buy or recommendations for any security, nor does it constitute an offer to provide investment advisory by Donkey Stock.