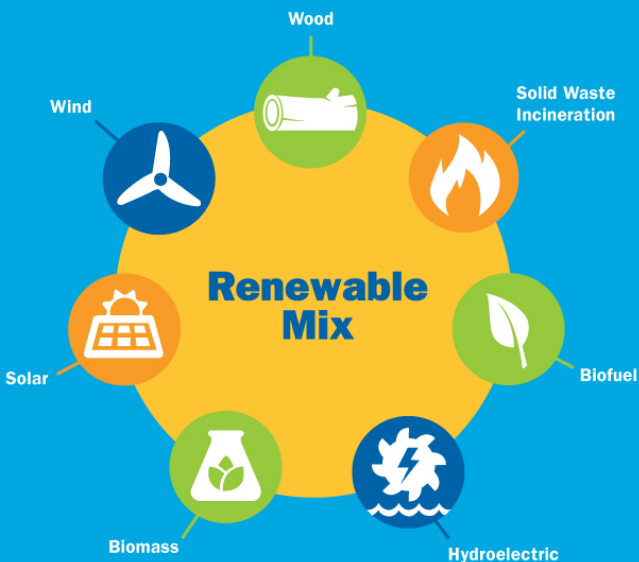


# Renewables make up around 10% of our energy mix.



## Wind Power

A wind turbine (blade and tower) can be as tall as a football field is long (over 300 feet).

Wind power has been the fastest-growing source of energy in the world since 1990.



Michigan is ranked in the top 20 U.S. states for wind power potential.

**4%** of the total energy mix

**45%** of the renewable energy mix

Blades are 160 feet long and weigh 9 tons.

### Lake Winds Energy Park®

- # 56 wind turbines, 315 feet tall
- 📍 16,000 acres in Mason County
- 🏠 Powers 27,000+ homes per year
- ⚡ 100 MW capacity

### Cross Winds Energy Park®

- # 62 wind turbines, 315 feet tall
- 📍 22,000 acres in Tuscola & Huron Counties
- 🏠 Powers 30,000+ homes per year
- ⚡ 111 MW capacity

## Hydroelectric



- # 13 hydroelectric plants
- 📍 Plants are on Au Sable, Kalamazoo, Grand, Manistee and Muskegon rivers.
- 🏠 Powers 35,100+ homes per year
- ⚡ 130 MW capacity

## Biomass



- 📍 Cadillac Renewable Energy Plant
- 🔥 Wood fuel – 40,000 tons per year
- 🏠 Powers 20,000+ homes per year
- ⚡ 38 MW capacity